

Operation condition

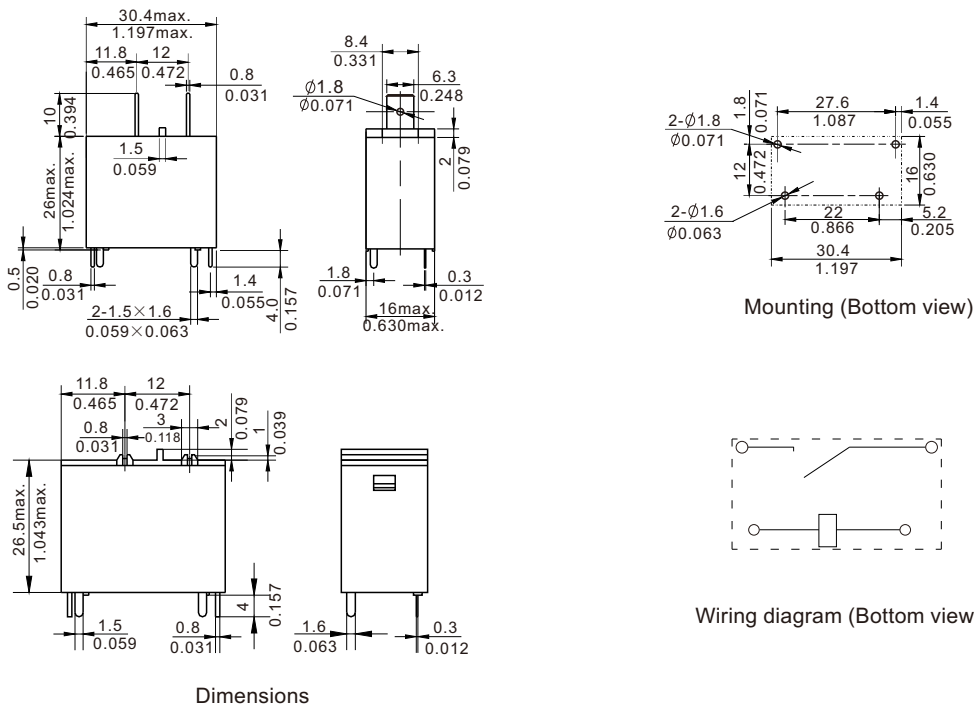
Insulation Resistance	1000M Ω min (at 500VDC)	Item 7 of IEC 60255-5
Dielectric Strength Between contacts Between contact and coil	50Hz 1000V 50Hz 5000V surge voltage:10kV	Item 6 of IEC 60255-5 Item 6 of IEC 60255-5 Item 8 of IEC 60255-5
Shock resistance	Functional:100m/s ² 11ms Survival:1000 m/s ² 11ms	IEC 68-2-27 Test Ea IEC 68-2-27 Test Ea
Vibration resistance	10Hz~55Hz Double amplitude Functional 1.5mm Double amplitude Survival 2.0mm	IEC 68-2-6 Test Fc IEC 68-2-6 Test Fc
Terminals strength	10N 8N	IEC 68-2-21 Test Ua1 and Ua2
Solderability	235 $^{\circ}$ C \pm 2 $^{\circ}$ C 3s \pm 0.5s	IEC 68-2-20 Test Ta method 1
Ambient Temperature	-30 $^{\circ}$ C~85 $^{\circ}$ C	
Relative Humidity	20%~85%	IEC 68-2-3 Test Ca
Mass	28g	

Safety approvals

Safety approval	UL&CUR	TÜV	CQC
Load	25A/250VAC 20A/277VAC 1.5HP 250VAC	25A/250VAC 20A/250VAC COS Φ =0.4	25A/250VAC

Dimensions

mm /inch



NOTES 1).Dimensions are in millimeters.
2).Inch equivalents are given for general information only.