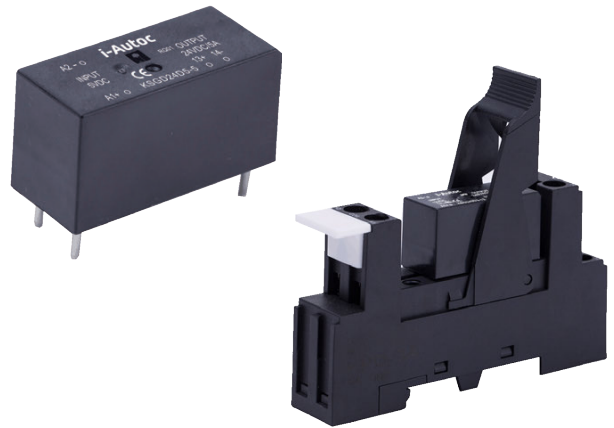


- ◆ MOSFET Output
- ◆ Control Voltage: 5VDC, 12VDC, 24VDC
- ◆ Load Current: 2A, 3A, 4A, 5A
- ◆ Dielectric Strength: 2500Vrms
- ◆ RoHS Compliant



### Ordering Information

<b>KSGD</b>	<b>48</b>	<b>D</b>	<b>2</b>	<b>-5</b>	<b>D</b>	<b>(XXX)</b>
KSGD Series	Load Voltage 24: 24VDC 48: 48VDC	DC Control	Load Current 2: 2Amp 3: 3Amp 4: 4Amp 5: 5Amp	Control Voltage 5: 5VDC 12: 12VDC 24: 24VDC 48: 48VDC 60: 60VDC	Blank: without socket D: with socket	Customized Code

### General Specifications

Input Specifications (Ta=25°C)		
Control Voltage Range	5	4-6VDC
	12	9.6-14.4VDC
	24	19.2-28.8VDC
	48	38.4-57.6VDC
	60	48-72VDC
Must Turn-On Voltage	5	4VDC
	12	9.6VDC
	24	19.2VDC
	48	38.4VDC
60	48VDC	
Must Turn-Off Voltage	1VDC	
Maximum Input Current	25mA	
Output Specifications (Ta=25°C)		
Load Voltage Range	24VDC	0-28.8VDC
	48VDC	0-57.6VDC
Load Current Range	2A	0.02-2A
	3A	0.02-3A
	4A	0.02-4A
	5A	0.02-5A

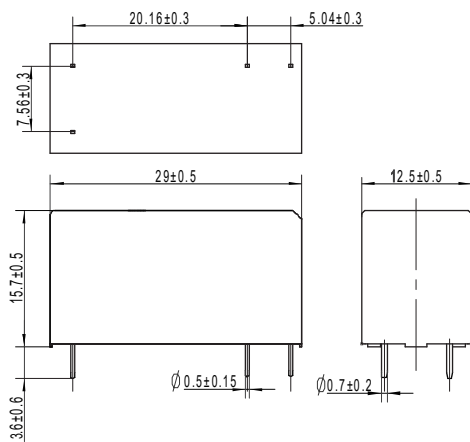
### General Specifications

Maximum 1 Cycle Surge Current (50Hz)	2A	20A
	3A	30A
	4A	40A
	5A	50A
Maximum Turn-On Time	1ms	
Maximum Turn-Off Time	1ms	
Maximum Off-State Leakage Current@Rated Load Voltage	0.1mA	
Maximum On-State Voltage Drop@Rated Current	0.3VDC	
<b>General Specifications (Ta=25°C)</b>		
Dielectric Strength (50/60Hz)	2500Vrms	
Minimum Insulation Resistance (@500VDC)	1000MΩ	
Ambient Temperature Range	-30°C ~ +80°C	
Storage Temperature Range	-30°C ~ +100°C	
Weight (Typical)	without socket	15g
	with socket	50g

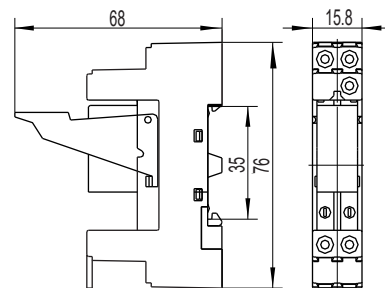
### Applications

Suitable for DC motor, electromagnetic valve, electromagnet control, and etc.

### Outline Dimensions

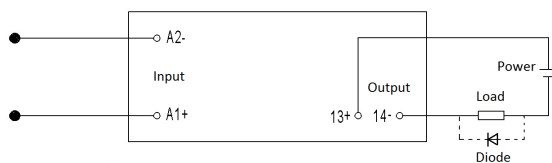


without Socket

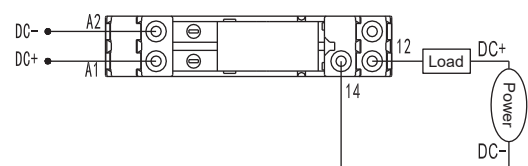


with Socket

### Wiring Diagram

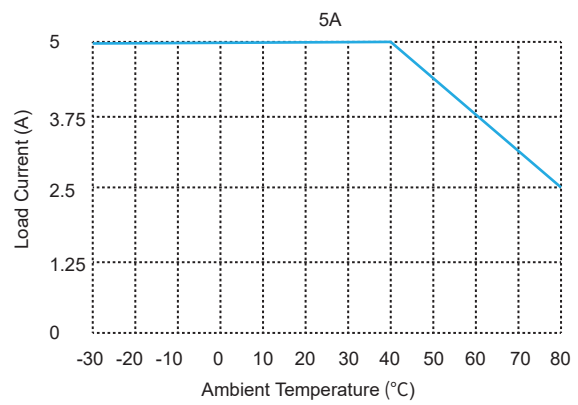
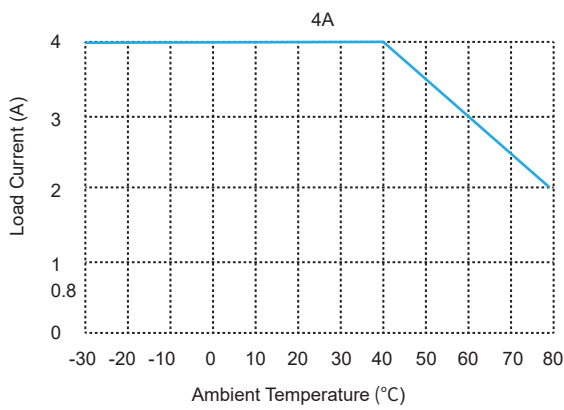
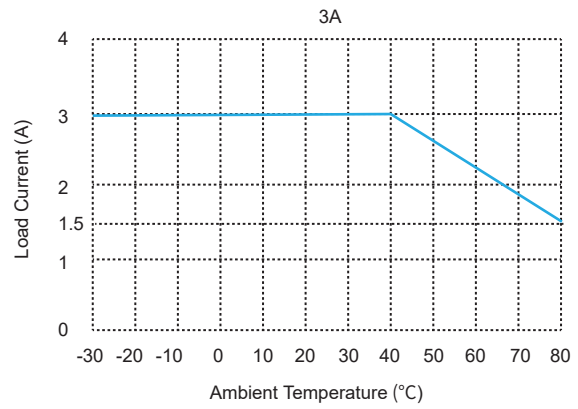
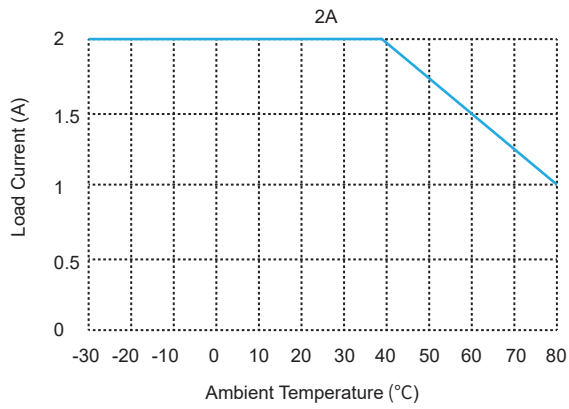


without socket



with socket

### Thermal Derating Curve



### General Notes

1. Soldering must be finished within 10 seconds at 260°C, or finished within 5 seconds at 350°C. Otherwise it may cause damage to the relay.
2. Terminal polarity must be observed. Otherwise it may cause damage to the relay.
3. When ambient temperature is above 25°C, the maximum load current decreases. See thermal derating curve.

### Agency Approvals (Certification)

