

NVF4-3 & NVF4-4



NVF4-3 29×29×26.5
 NVF4-4 29×29×26.5(+16)

Features

- Small size.
- Contact load capacity up to 80A.
- Suitable for automobile.
- PC board mounting and direct insert mounting available.
- 24V versions with contact gap >0.8mm.

Ordering Information

NVF4-3 **C** **Z** **50** **b** **DC12V** **1.8** **C** **D**

1 2 3 4 5 6 7 8 9

1 Part number: NVF4-3,NVF4-4(Insulation Bracket), NVF4-4a(Metal Bracket)
 2 Contact arrangement: A:1A; B:1B; C:1C; U:1U
 3 Enclosure: S: Sealed type; Z: Dust cover;
 4 Contact current: A Form:25A,40A,50A,80A;
 B Form:25A,40A,70A;
 C Form:25A,40A,50A,70A,80A;
 U Form:2×15A, 2×25A
 5 Terminals: b: PCB type; a: plug in type

6 Coil rated voltage(V): DC:6,12,24
 7 Coil power consumption: 1.8:1.8W; 2.3:2.3W; 2.6:2.6W
 8 Contact material: C:AgCdO; N:AgNi; NIL: AgSnO₂
 9 Coil transient suppression: D: with diode;
 2D:with two diodes;
 R: with resistance;
 DR: with diode and resistance;
 NIL: standard

Contact Data

Contact Arrangement	1A (SPSTNO) , 1B (SPSTNC) ,1C (SPDT(B-M)) ,1U (SPSTNODM)			
Contact Material	AgSnO ₂ , AgNi, AgCdO			
Contact Rating (resistive)	1A	1 B	1C	1U
	50A,80A/14VDC 25A,40A/24VDC	40A,70A/14VDC 25A,40A/24VDC	NO:50A,80A/14VDC NC:40A,70A/14VDC 25A, 40A/24VDC	2×25A/14VDC 2×15A/24VDC
Max. Switching Power	1120W			
Max. Switching Voltage	75VDC Max.Switching Current:80A			
Contact Resistance or Voltage drop	≤30mΩ Item 4.12 of IEC 61810-7			
Operation life	Electrical	10 ⁵ Item 4.30 of IEC 61810-7		
	Mechanical	10 ⁷ Item 4.31 of IEC 61810-7		

NOTE: Special high performance 24V version with contact gap >0.8mm; Limiting continuous current at 125°C:NC/NO:10A/15A,1U:2×11A.

Coil Parameter

Dash numbers	Coil voltage VDC		Coil resistance Ω ±10%	Pickup voltage VDC(max) (65%of rated voltage)	Release voltage VDC(min) (10% of rated voltage)	Coil power consumption W	Operate Time ms	Release Time ms
	Rated	Max.						
006-1800	6	7.8	20	3.9	0.6	1.8	≤7	≤5
012-1800	12	15.6	80	7.8	1.2			
024-1800	24	31.2	320	15.6	2.4			
006-2300	6	7.8	15.6	3.9	0.6	2.3	≤7	≤5
012-2300	12	15.6	62.6	7.8	1.2			
024-2300	24	31.2	250.4	15.6	2.4			
006-2600	6	7.8	13.8	3.9	0.6	2.6	≤7	≤5
012-2600	12	15.6	55.4	7.8	1.2			
024-2600	24	31.2	221.5	15.6	2.4			

CAUTION: 1.The use of any coil voltage less than the rated coil voltage will compromise the operation of the relay.
 2.Pickup and release voltage are for test purposes only and are not to be used as design criteria.

NVF4-3 & NVF4-4

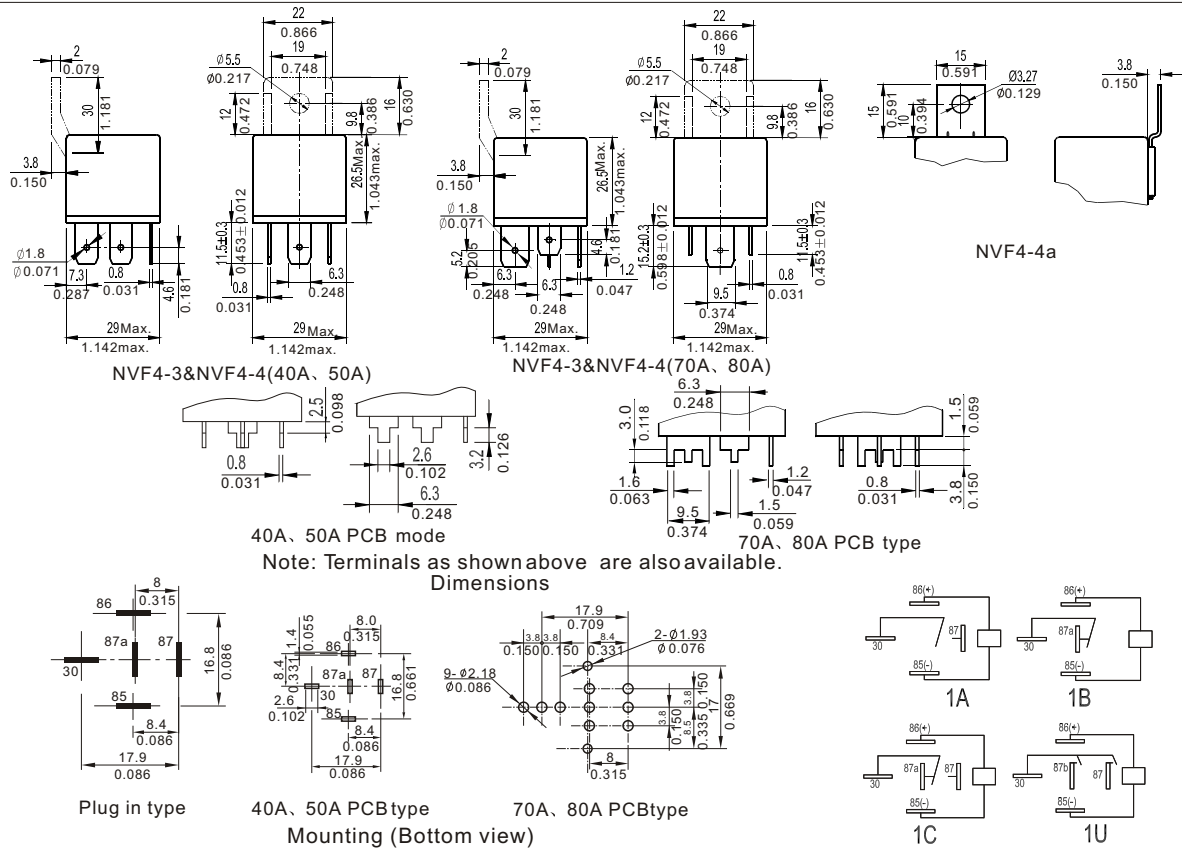
Operation condition

Insulation Resistance ¹⁾	100M Ω min (at 500VDC)	Item 7 of IEC 60255-5
Dielectric Strength ¹⁾		
Between contacts	50Hz 500V	Item 6 of IEC 60255-5
Between contact and coil	50Hz 500V	Item 6 of IEC 60255-5
Shock resistance	147m/s ² 11ms	IEC 68-2-27 Test Ea
Vibration resistance	10Hz~40Hz double amplitude 1.5mm	IEC 68-2-6 Test Fc
Terminals strength	8N 4N(PC type)	IEC 68-2-21 Test Ua 2
Solderability	235 $^{\circ}$ C \pm 2 $^{\circ}$ C 3s \pm 0.5s	IEC 68-2-20 Test Ta method 1
Ambient Temperature	-40 $^{\circ}$ C ~ 125 $^{\circ}$ C	
Relative Humidity	85% (at 40 $^{\circ}$ C)	IEC 68-2-3 Test Ca
Mass	46g(NVF4-3); 48g(NVF4-4)	

Note: 1). When testing, coil terminals should be connected, If coil transient suppression is installed in relay .

Dimensions

mm /inch



NOTES 1). Dimensions are in millimeters.

2). Inch equivalents are given for general information only.

Reference Data

